



# TABLE OF ORGANIZATION

Approved Board of Trustees: May 20, 2026

**CARROLL COMMUNITY COLLEGE**

*Board of Trustees*

President  
*Dr. Rosalie Mince*

Executive Associate to the  
President  
*Lauren Walker*

Vice President,  
Academic and Student  
Affairs and Dean of  
Faculty  
*Dr. Kristie Crumley*

Vice President,  
Workforce, Business  
and Community  
Education  
*Dr. Kelly Koermer*

Vice President,  
Effectiveness, Integrity,  
and Accountability  
*Dr. Michelle Kloss*

Vice President  
of Administrative  
Services  
*Patricia Davis*

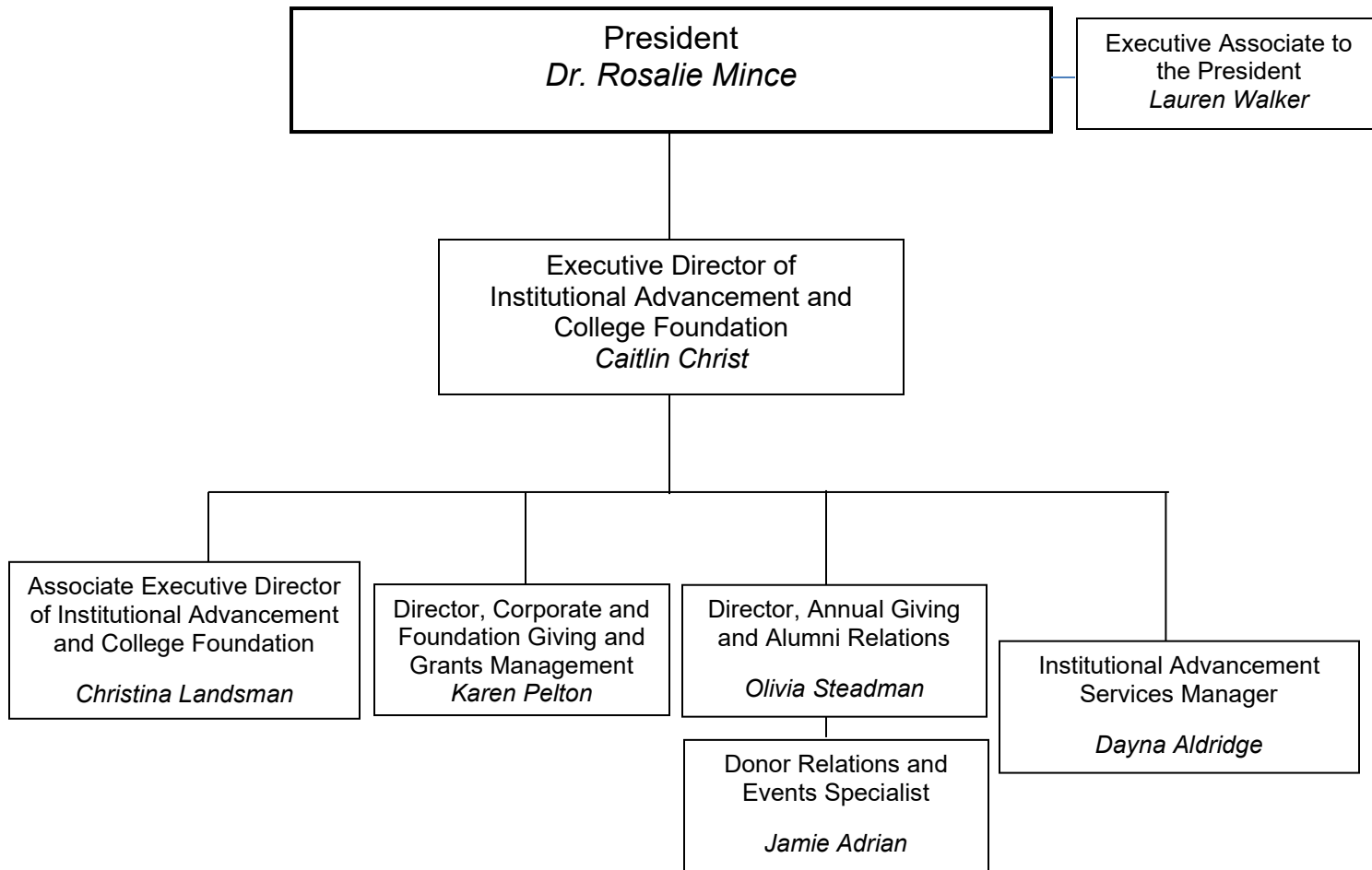
Chief Communications  
and Public Relations  
Officer  
*Lisa Slappy*

Executive Director of  
College Standards and  
Accountability  
*Clyde Johnson*

Executive Director of Institutional  
Advancement and College  
Foundation  
*Caitlin Christ*

Administrative  
Specialist  
*Lynda Swanson*

# INSTITUTIONAL ADVANCEMENT AND COLLEGE FOUNDATION



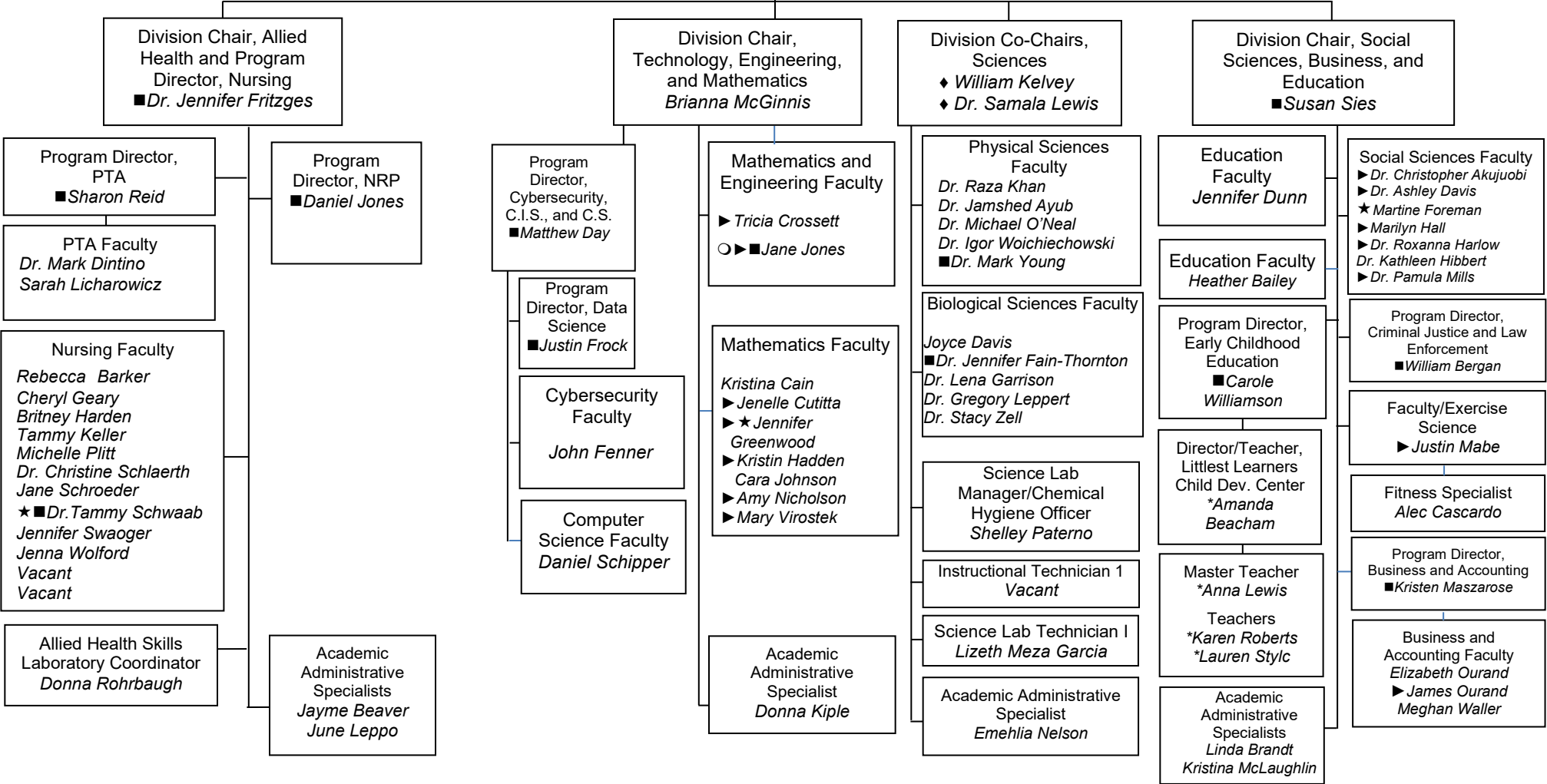
# ACADEMIC AFFAIRS

Faculty/Staff Designations:

- ▶ Coordinator
- Auxiliary
- Program Director
- ◆ Co-Chair
- ★ Assistant Chair
- STEM Scholars Program Coordinator
- \*Grant Position

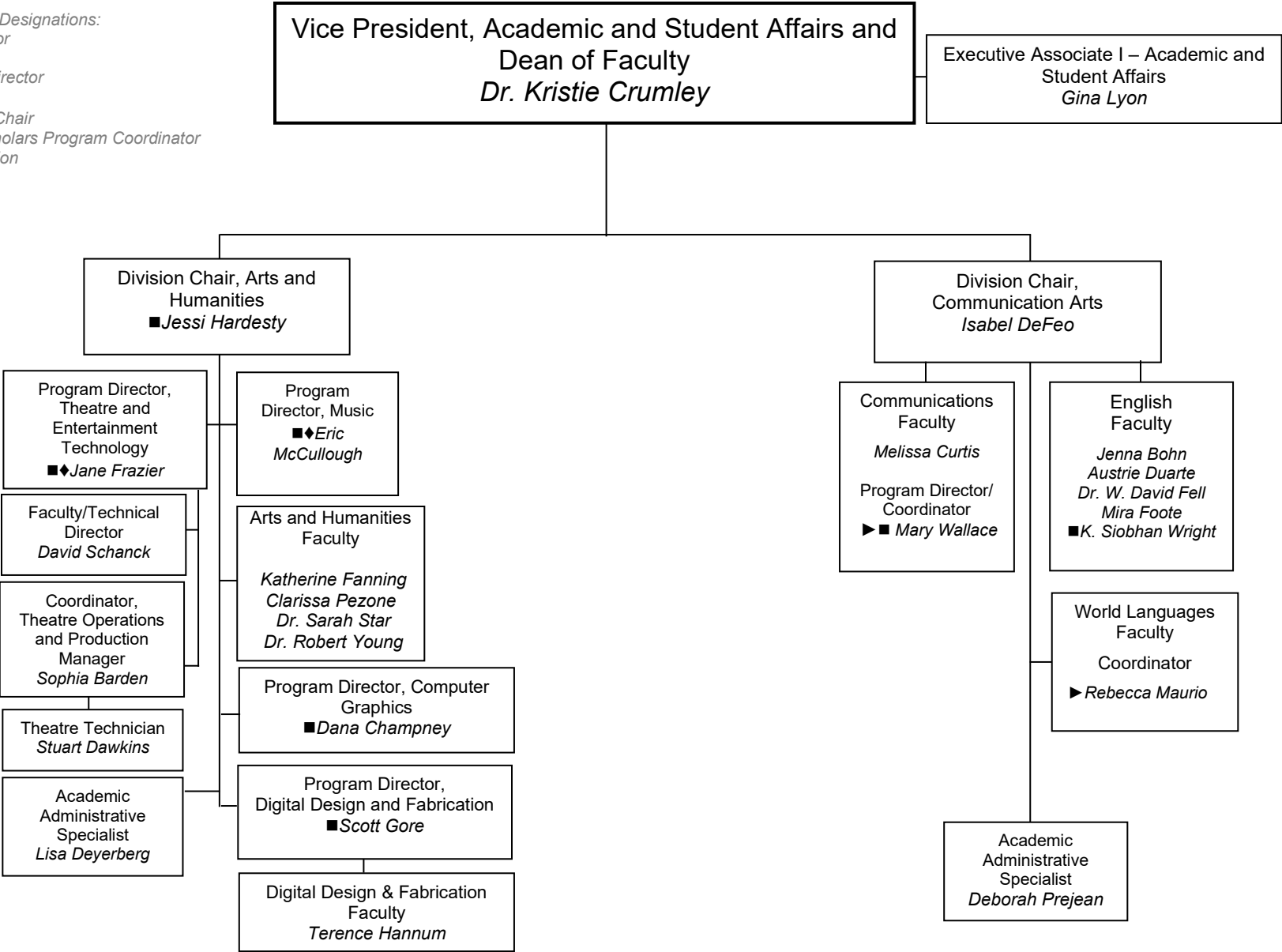
**Vice President, Academic and Student Affairs and  
Dean of Faculty  
Dr. Kristie Crumley**

Executive Associate I – Academic and  
Student Affairs  
*Gina Lyon*

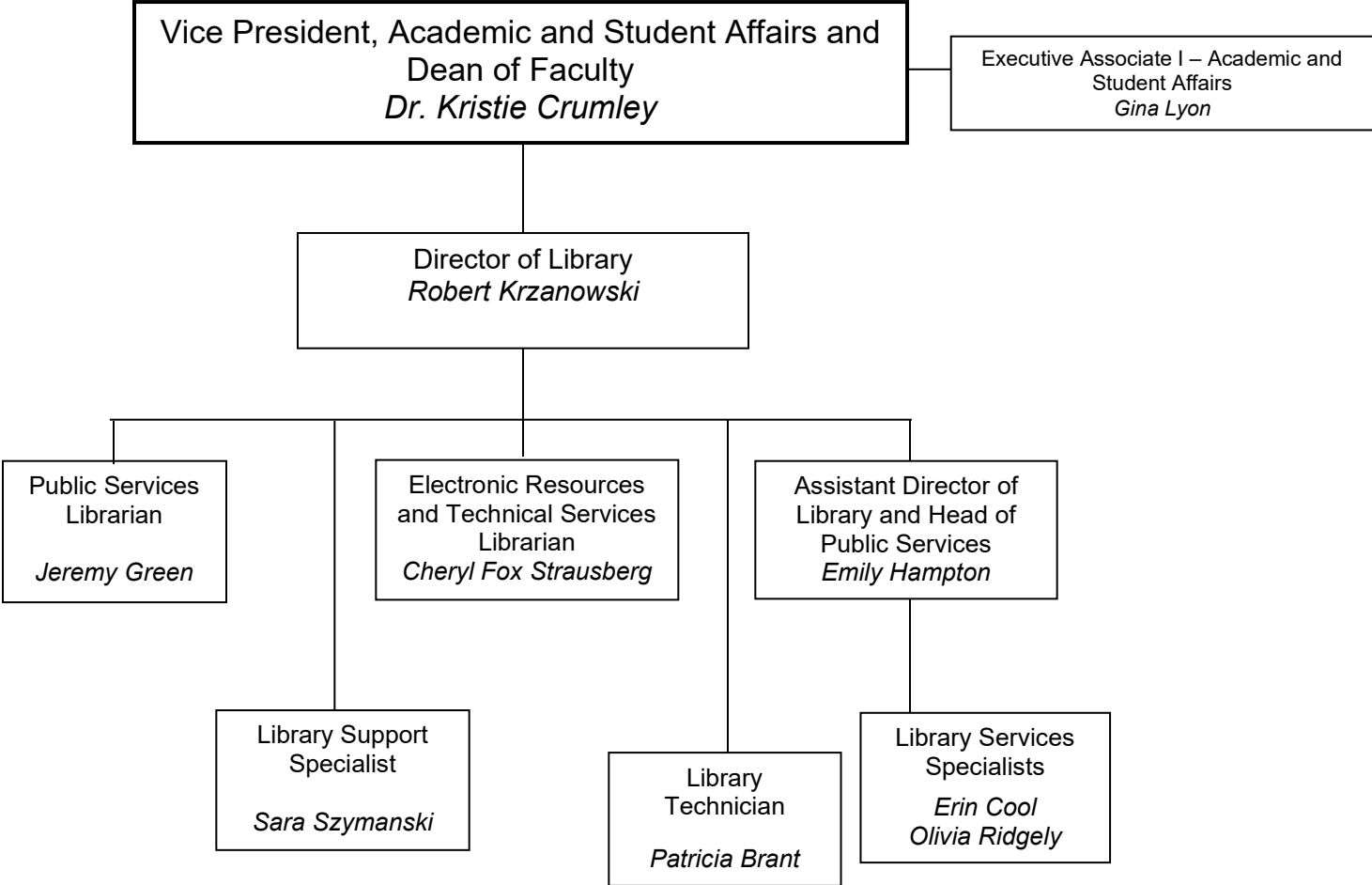


# ACADEMIC AFFAIRS

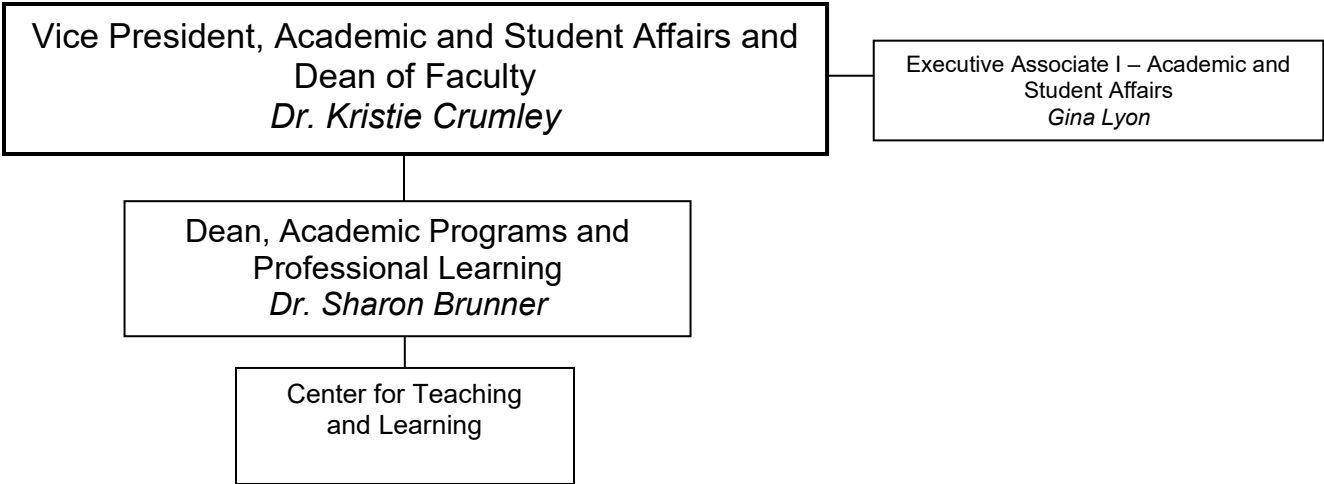
- Faculty/Staff Designations:
- ▶ Coordinator
  - Auxiliary
  - Program Director
  - ◆ Co-Chair
  - ★ Assistant Chair
  - STEM Scholars Program Coordinator
  - \* Grant Position



**ACADEMIC AFFAIRS  
LEARNING RESOURCES**



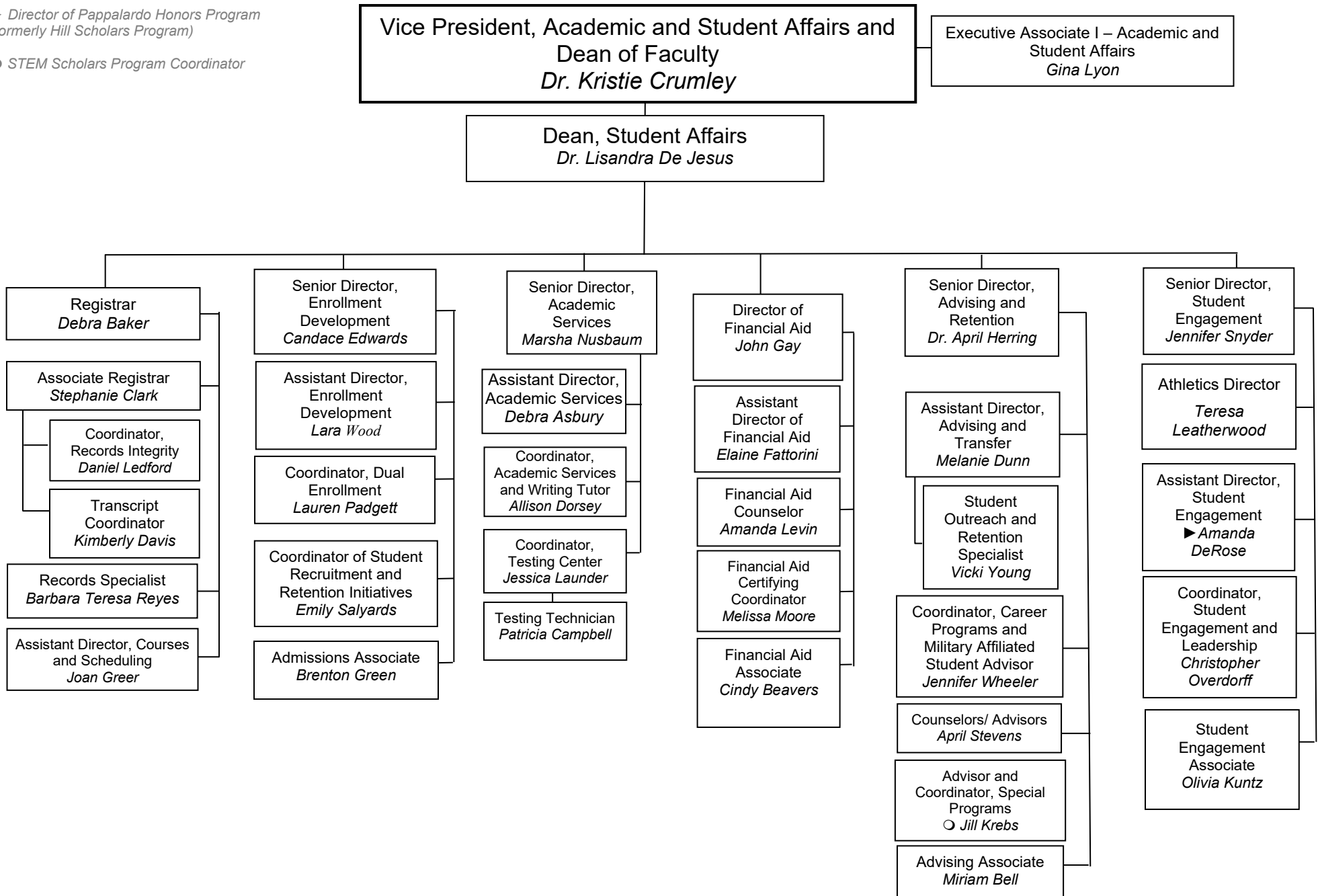
# ACADEMIC AFFAIRS



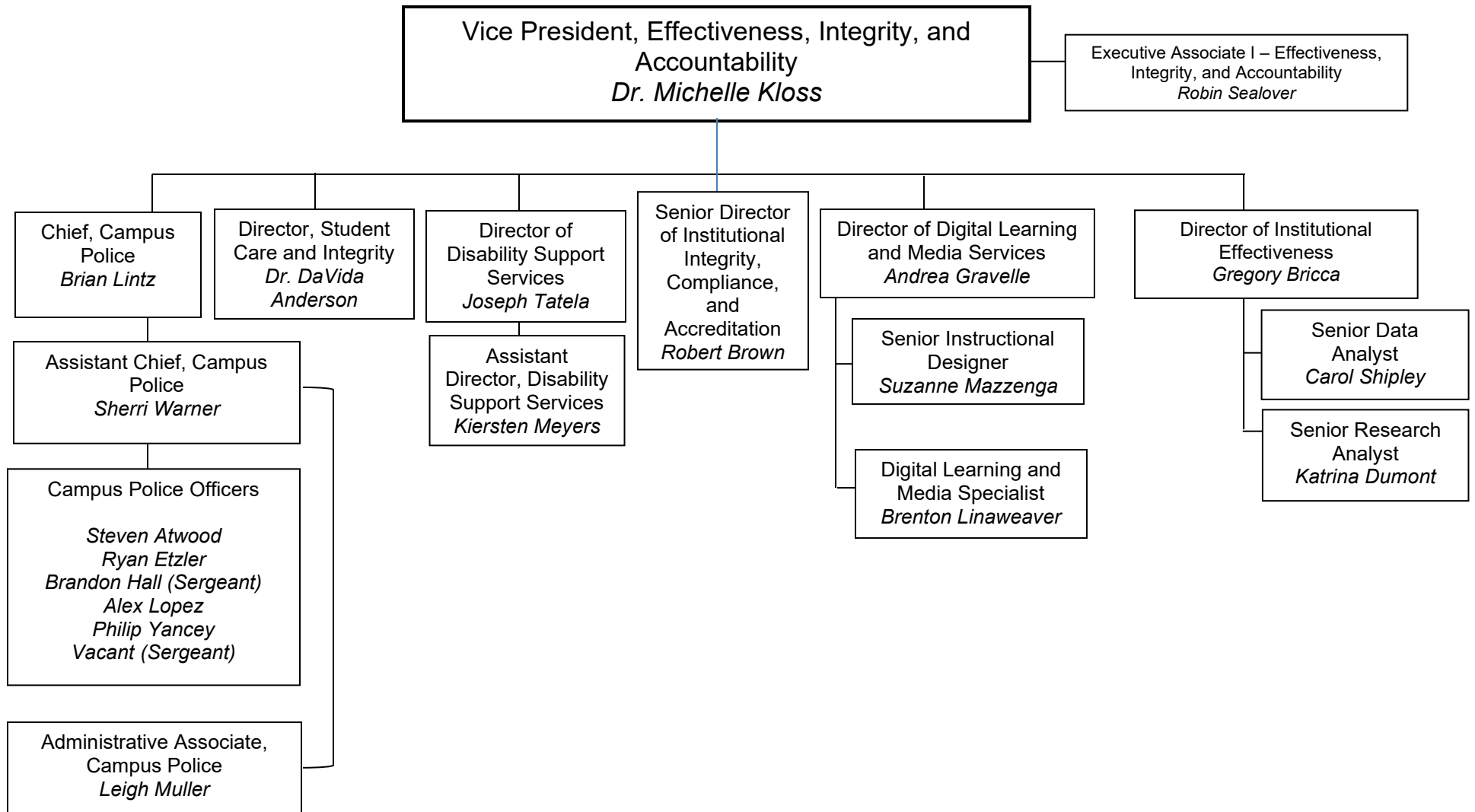
# STUDENT AFFAIRS

► Director of Pappalardo Honors Program  
(formerly Hill Scholars Program)

○ STEM Scholars Program Coordinator

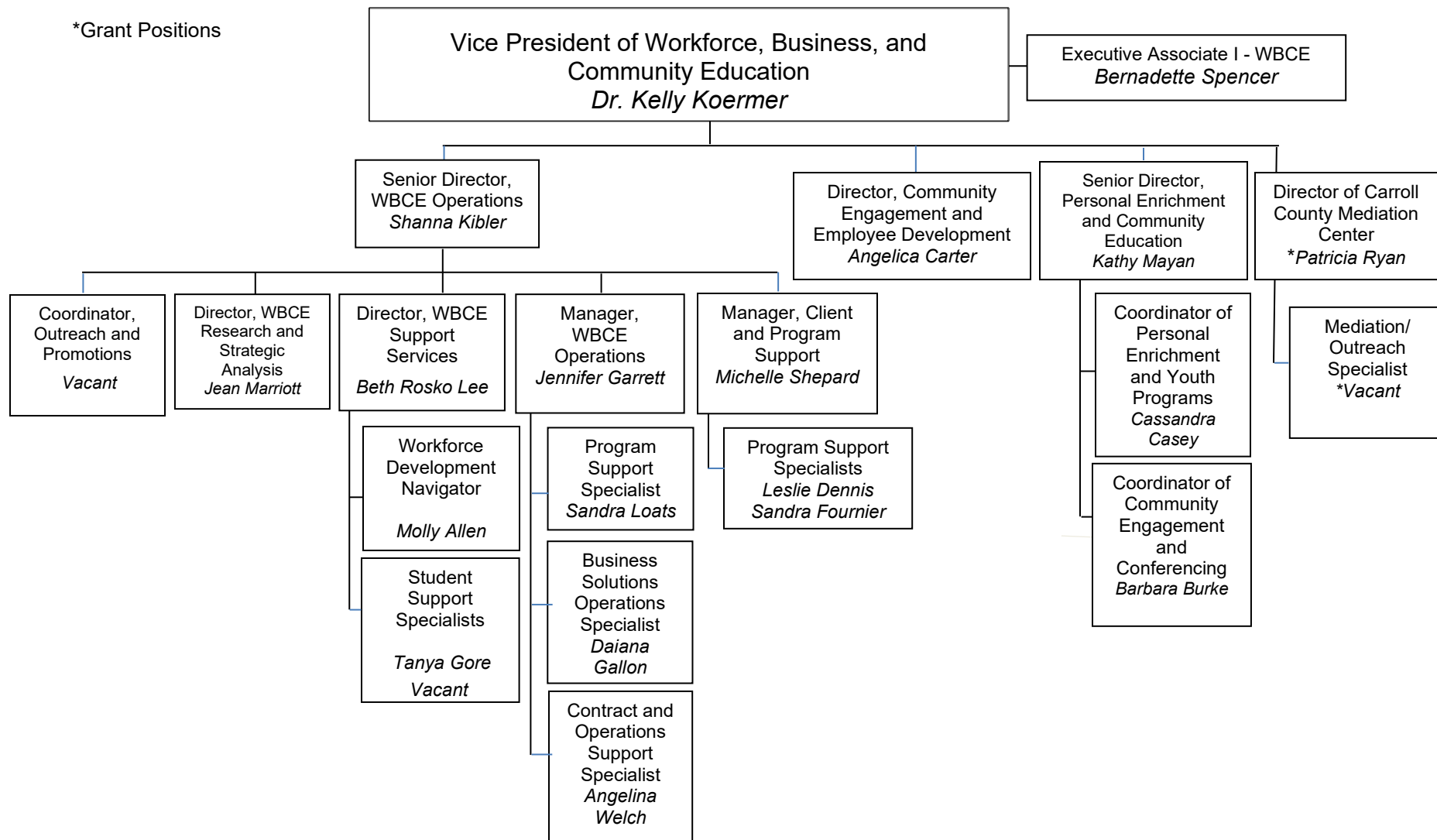


# EFFECTIVENESS, INTEGRITY, AND ACCOUNTABILITY



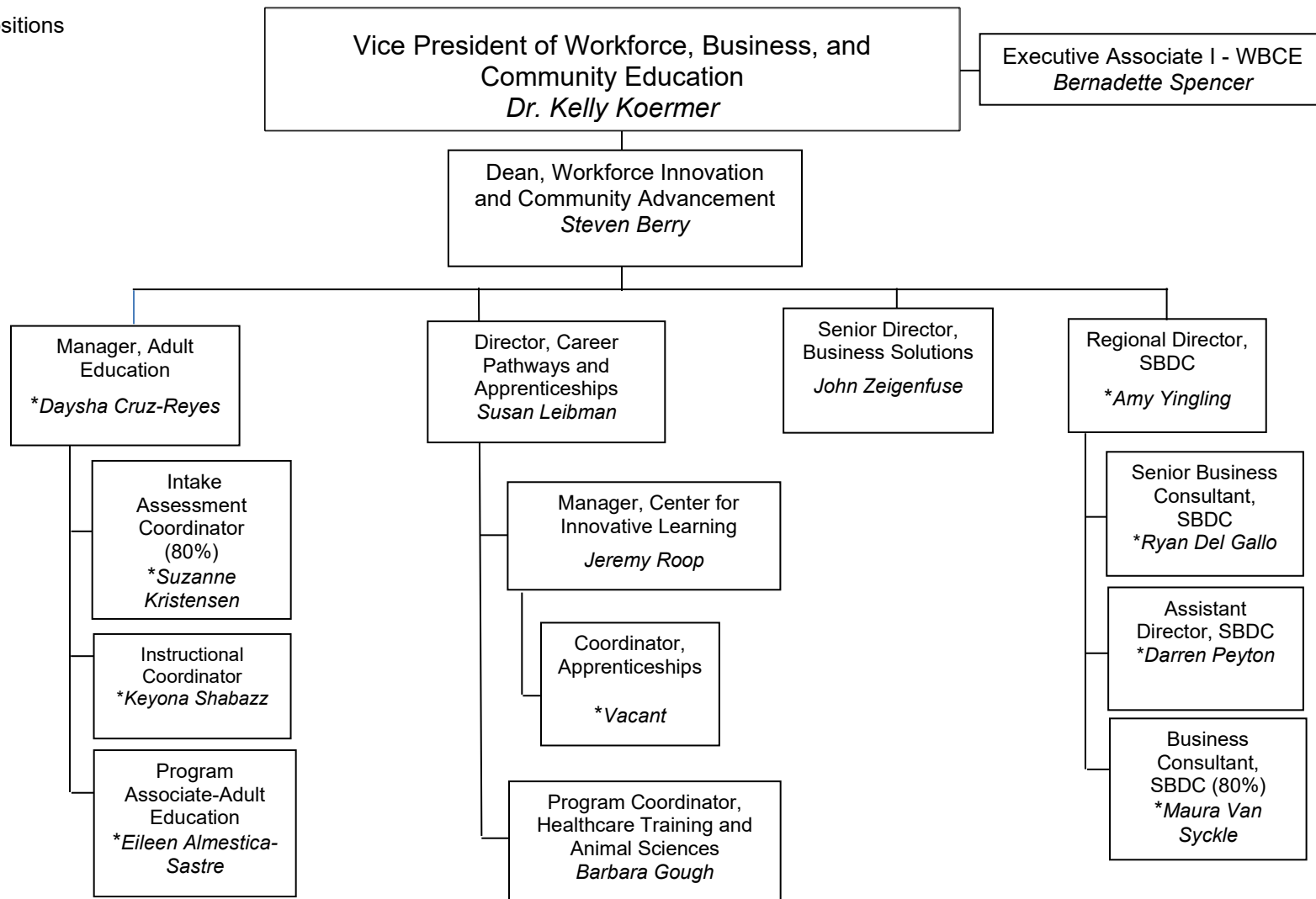
# WORKFORCE, BUSINESS, AND COMMUNITY EDUCATION

\*Grant Positions

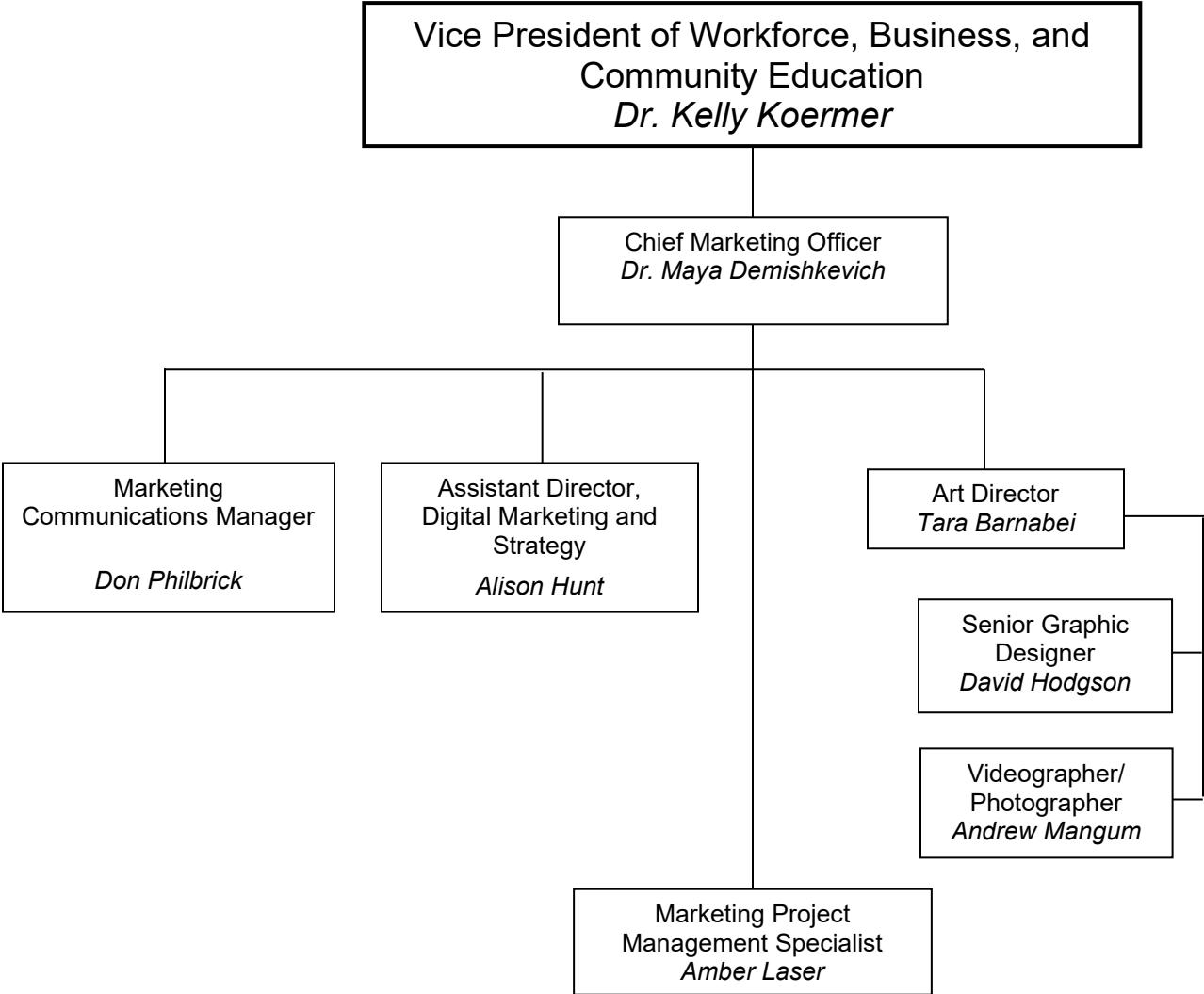


# WORKFORCE, BUSINESS, AND COMMUNITY EDUCATION

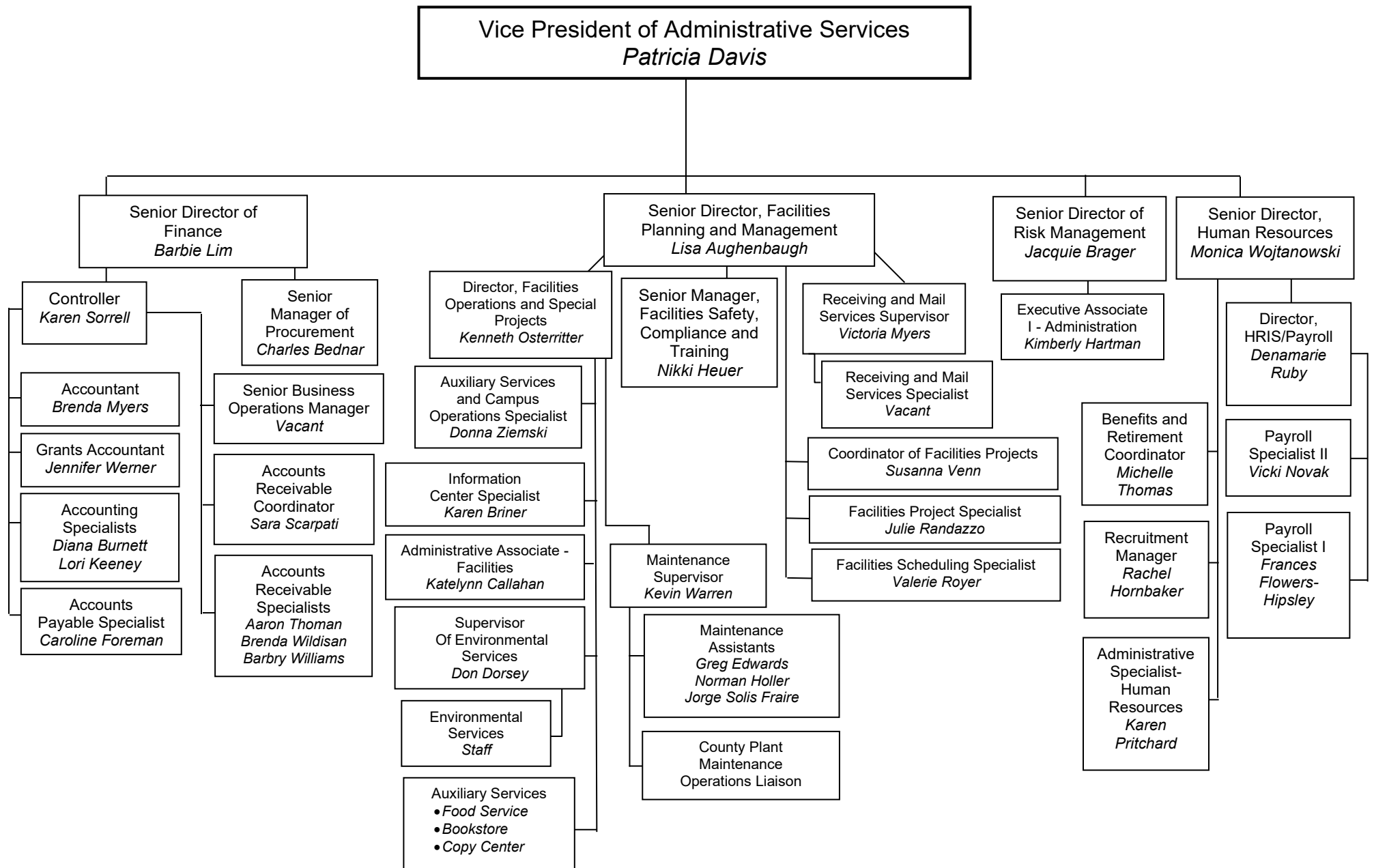
\* Grant Positions



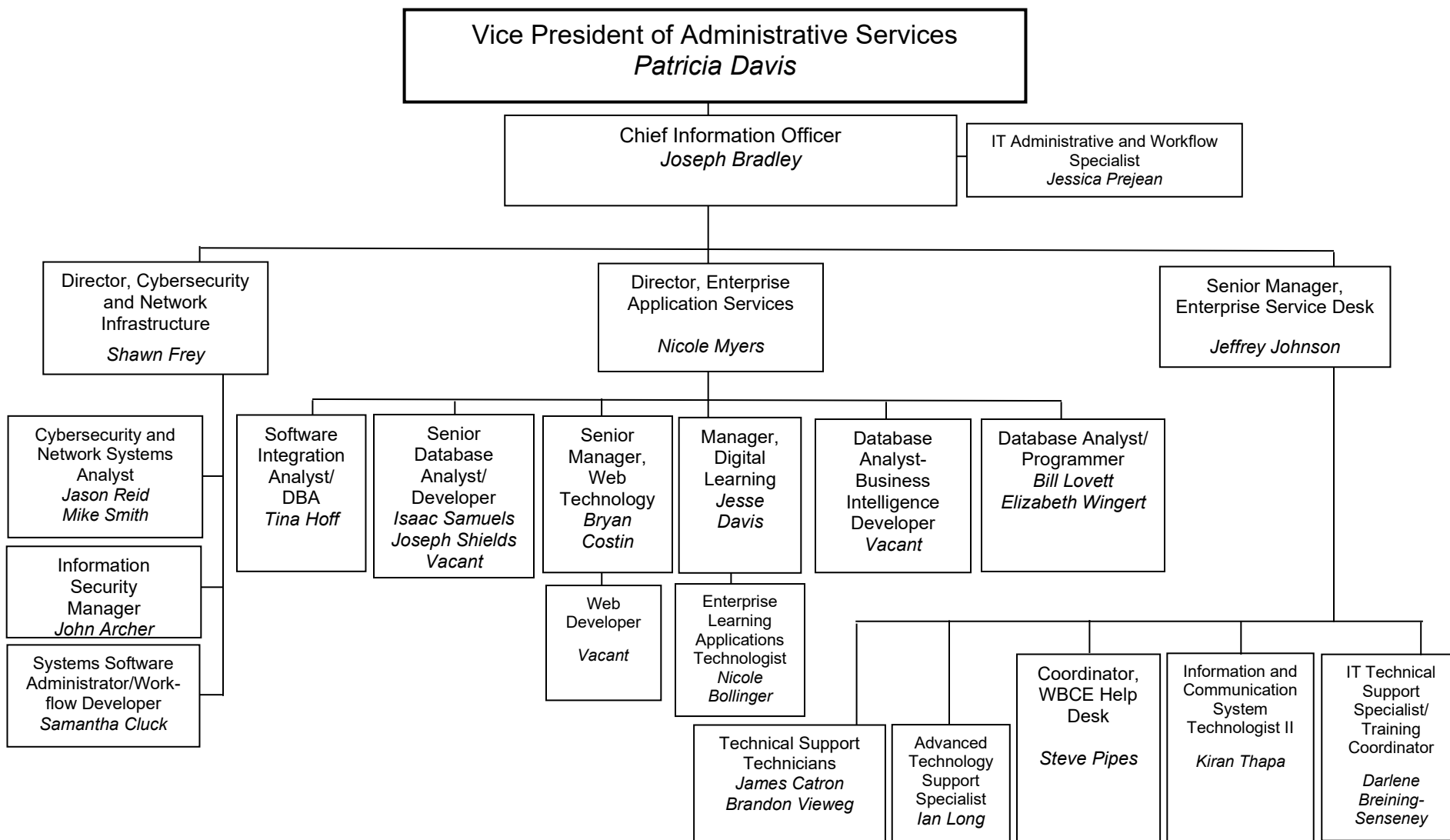
**WORKFORCE, BUSINESS, AND COMMUNITY EDUCATION  
STRATEGIC MARKETING AND BRAND MANAGEMENT**



# ADMINISTRATION FISCAL AFFAIRS, FACILITIES, RISK MANAGEMENT, HUMAN RESOURCES



## ADMINISTRATION: NETWORK AND TECHNOLOGY SERVICES



### ADMINISTRATION: ENVIRONMENTAL SERVICES

