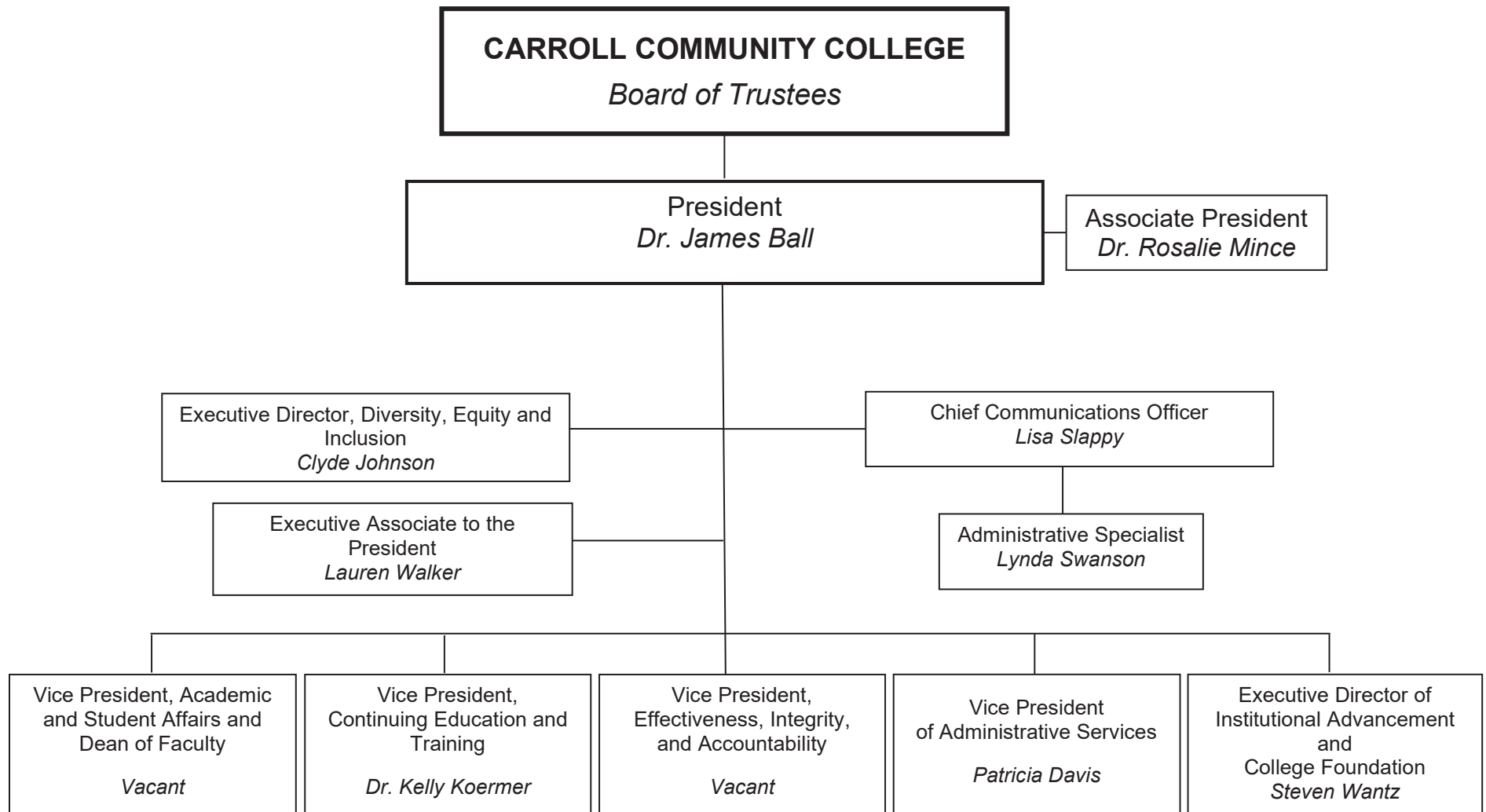


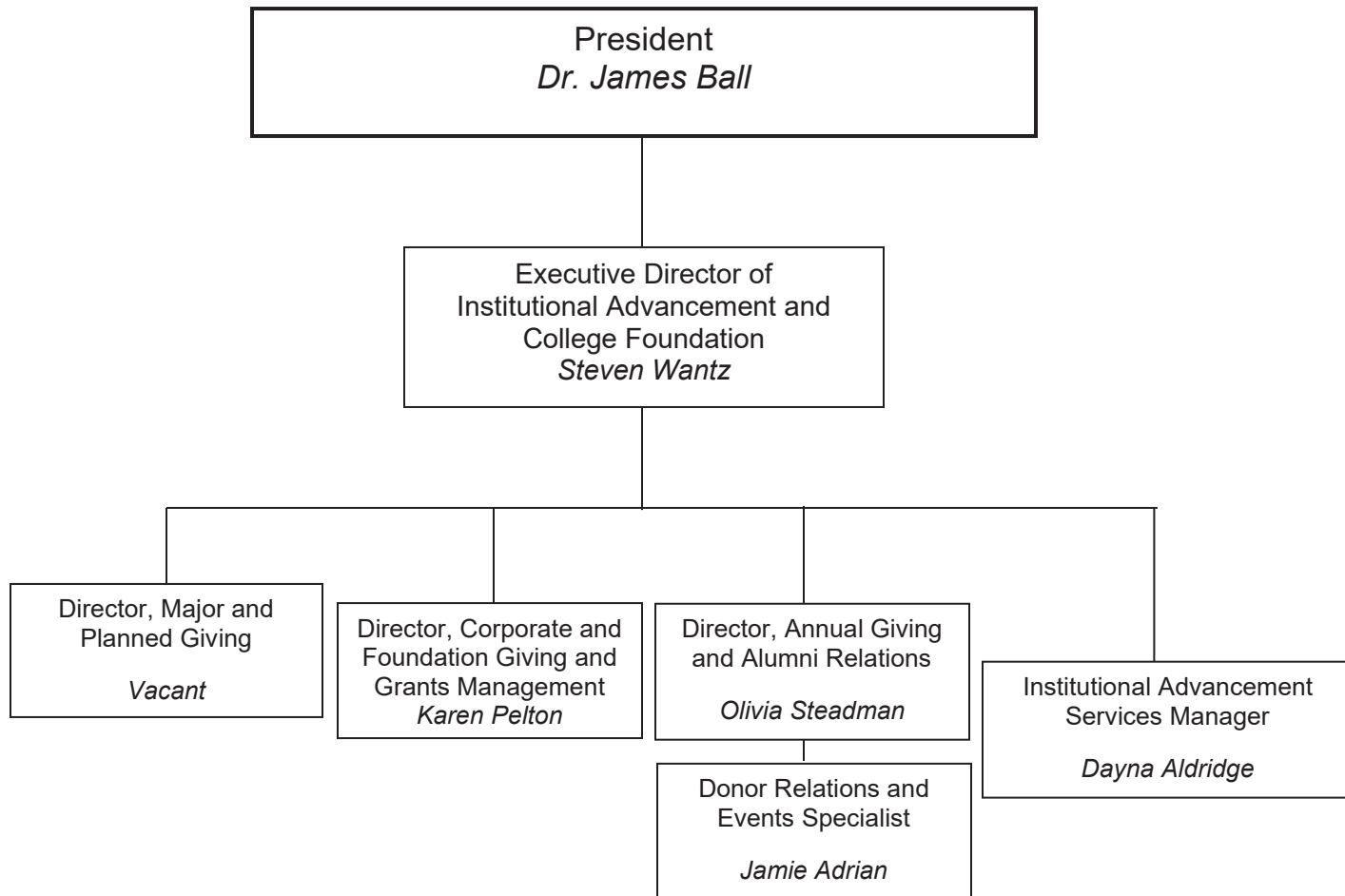


TABLE OF ORGANIZATION

Approved Board of Trustees: February 21, 2024



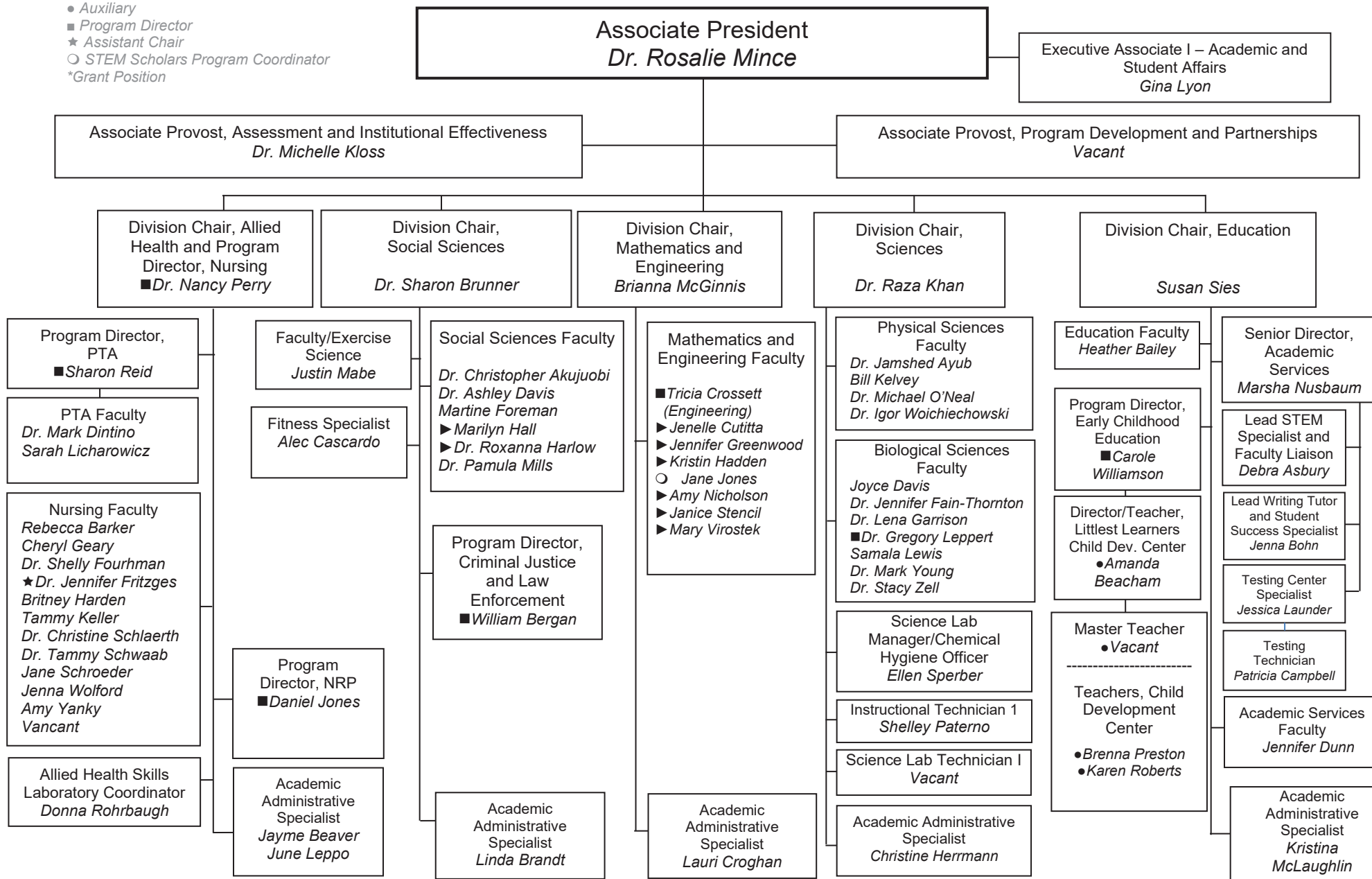
INSTITUTIONAL ADVANCEMENT AND COLLEGE FOUNDATION



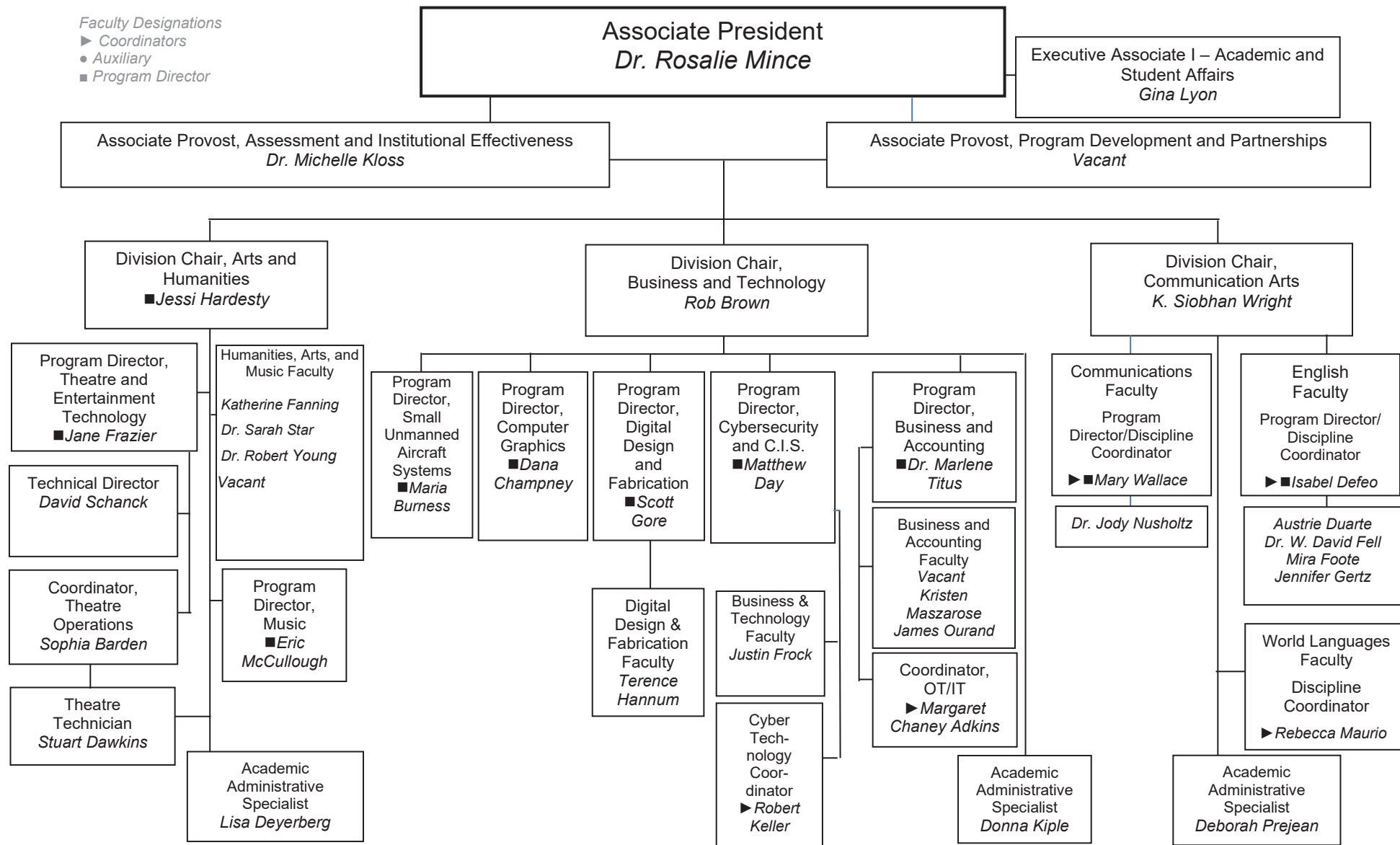
ACADEMIC AFFAIRS

Faculty/Staff Designations

- Discipline Coordinator
- Auxiliary
- Program Director
- ★ Assistant Chair
- STEM Scholars Program Coordinator
- *Grant Position



ACADEMIC AFFAIRS



STUDENT AFFAIRS

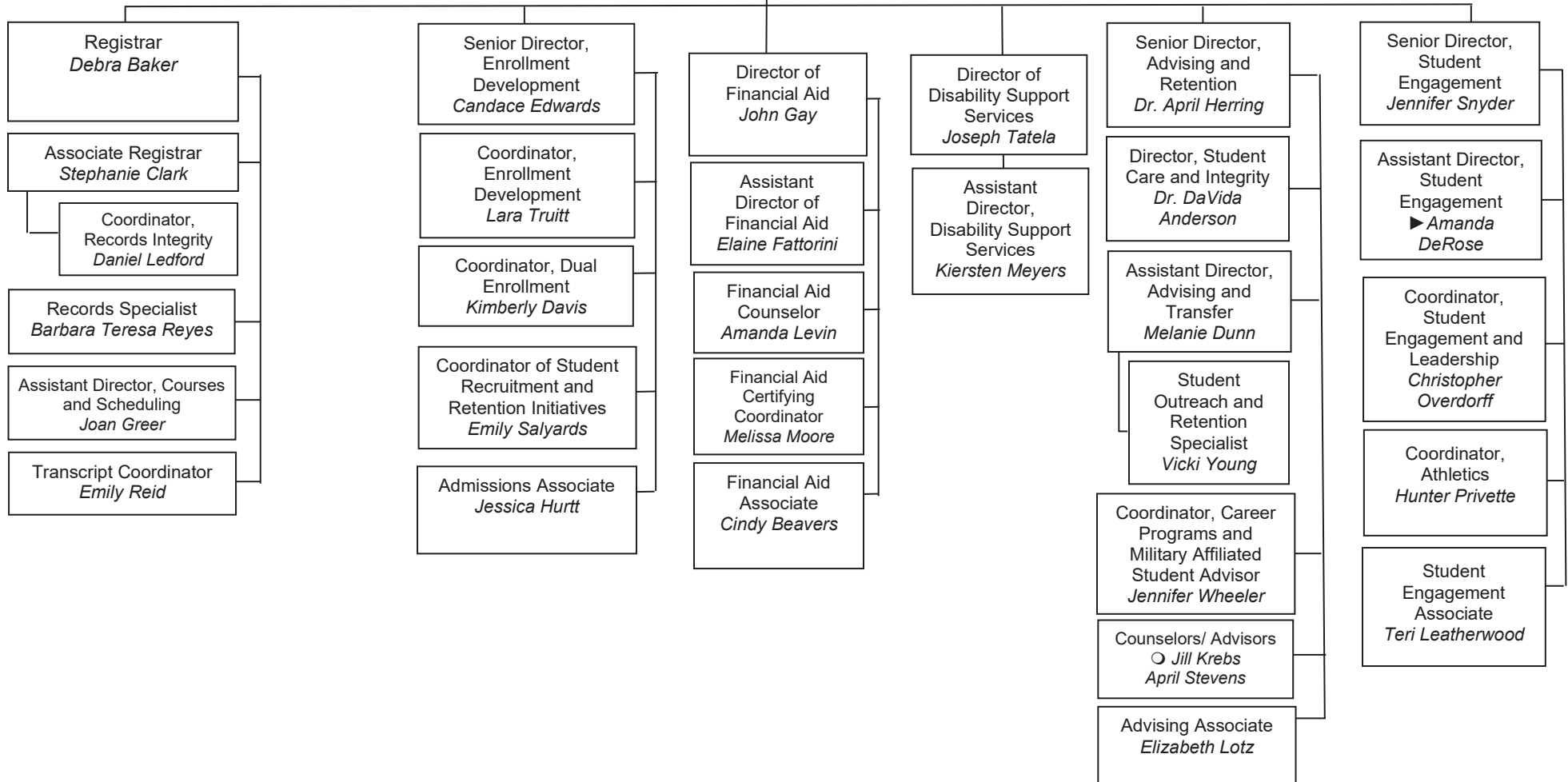
► Director of Pappalardo Honors Program
(formerly Hill Scholars Program)

○ STEM Scholars Program Coordinator

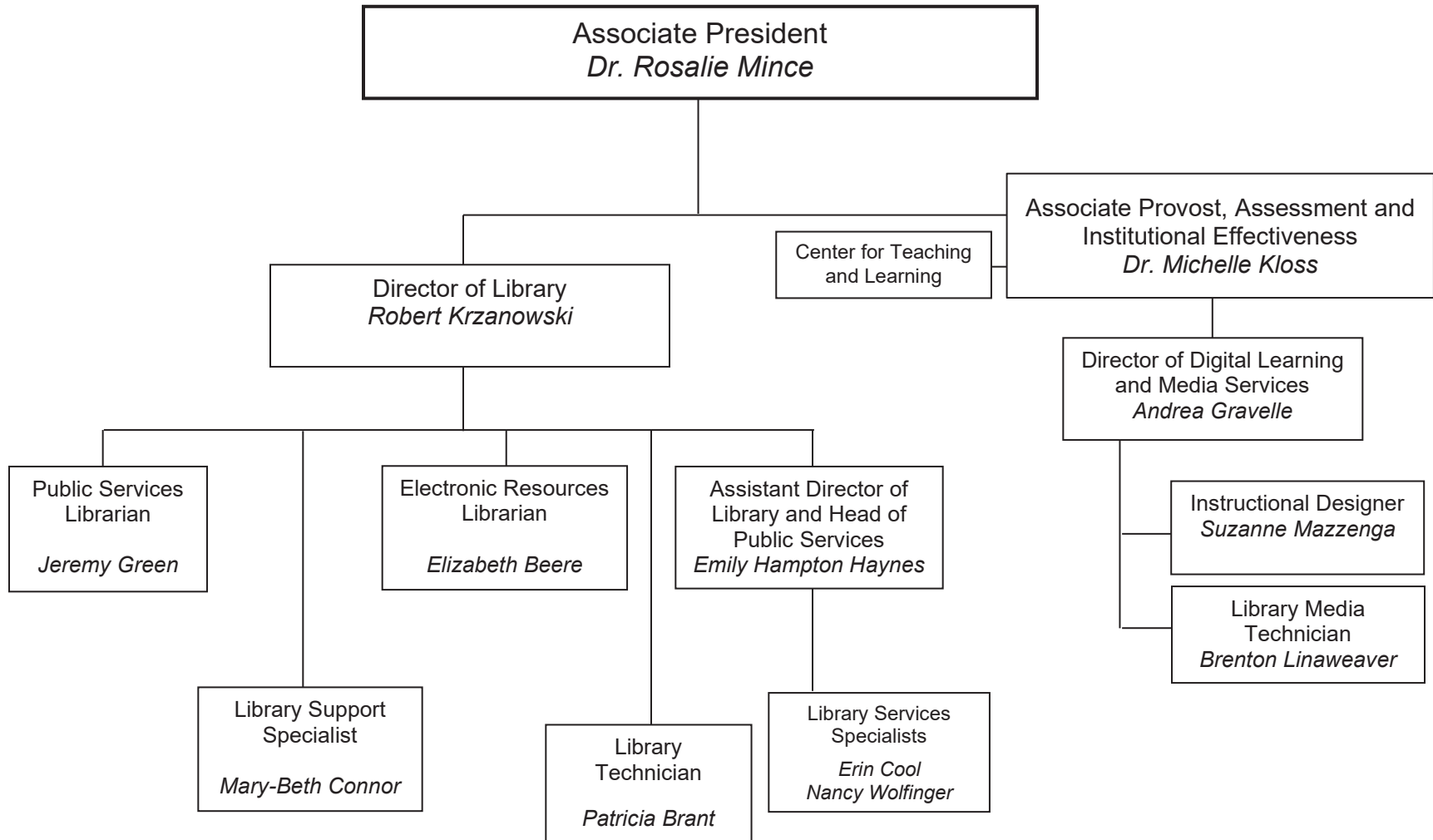
Associate President
Dr. Rosalie Mince

Executive Associate I – Academic and
Student Affairs
Gina Lyon

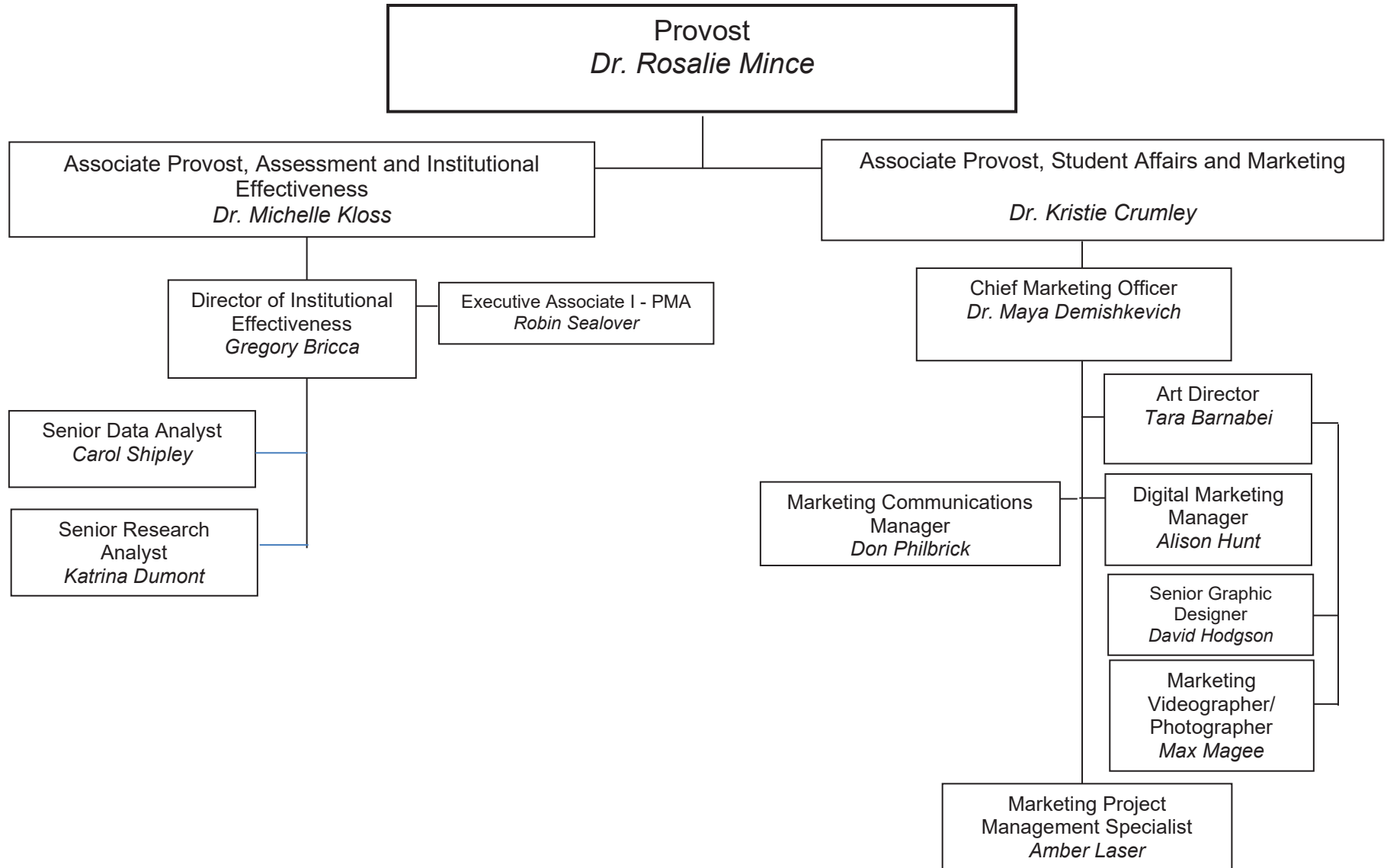
**Associate Provost, Student Affairs
and Marketing**
Dr. Kristie Crumley



LIBRARY MEDIA DISTANCE SERVICE



PLANNING, MARKETING AND ASSESSMENT



CONTINUING EDUCATION AND TRAINING

Vice President, Continuing Education and Training
Dr. Kelly Koermer

Executive Associate I
Bernadette Spencer

Senior Director, Career and Continuing Professional Education
Steve Berry

*Regional Director, SBDC
Amy Yingling

Senior Director, CET Operations
Shanna Kibler

Senior Director, Corporate Services and Workforce Development
Janet Ladd

Senior Director, Personal Enrichment and Community Education
Kathy Mayan

*Director of Carroll County Mediation Center
Patricia Ryan

Coordinator, Career and Continuing Professional Education
Barbara Burke

Coordinator, I.T., Advanced Manufacturing and Innovation
Jeremy Roop

Coordinator of Healthcare and Safety Training
Diana Dannettel

Coordinator, Nursing and Healthcare Training
Ashley Roper

* Director, Adult Education and Literacy Services
Susan Leibman

*Intake Assessment Coordinator (80%)
Suzanne Kristensen

* Instructional Coordinator
Vacant

*Program Associate-Adult Education
Eileen Almestica-Sastre

Program Support Specialist
Sandra Fournier

Program Associate
Leslie Dennis

*Senior Business Consultant, SBDC
Ryan Del Gallo

*Training Director, SBDC
Brian Laing

*Assistant Director, SBDC
Darren Peyton

*Business Consultant, SBDC
Maura Van Syckle

Director, CET Research and Strategic Analysis
Jean Marriott

Coordinator, Outreach and Promotions
Cheryl Campitelli

Coordinator, CET Operations
Jennifer Garrett

Contract and Operations Support Specialist
Angelina Welch

Director, CET Support Services
Beth Rosko Lee

Workforce Development Navigator
Molly Allen

Student Support Specialists
Tracy Berends
Tanya Gore

Director, Corporate Solutions
Angelica Carter

*Director of Miller Resources for Entrepreneurs
Thomas Mazerski

Client Support Services Coordinator
Michelle Shepard

Business Solutions Operations Specialist
Daiana Gallon

Coordinator of Lifelong Learning
Cassandra Casey

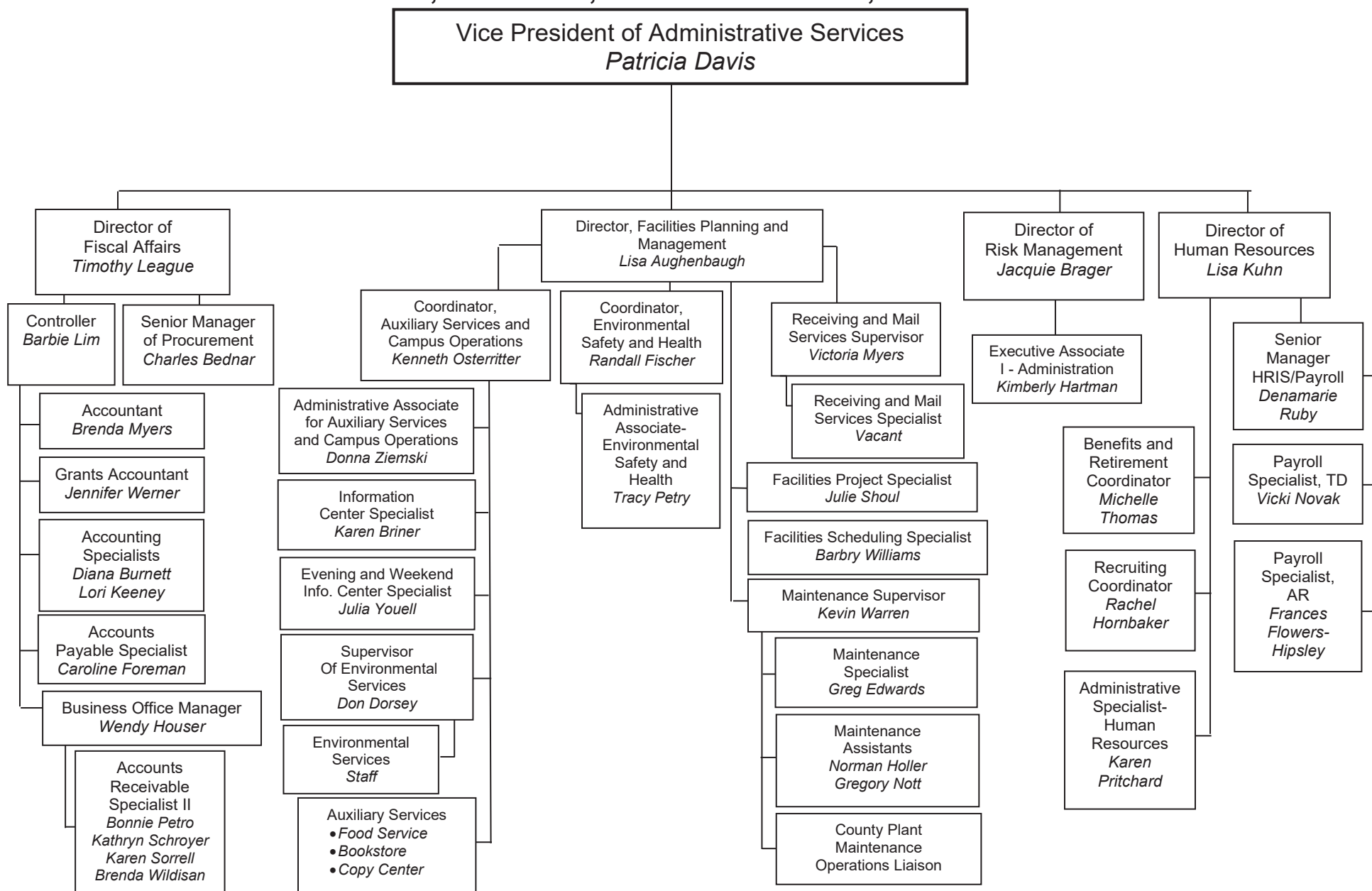
Program Support Specialist
Sandra Loats

*Mediation/ Outreach Specialist
Madelin Sura-Argueta

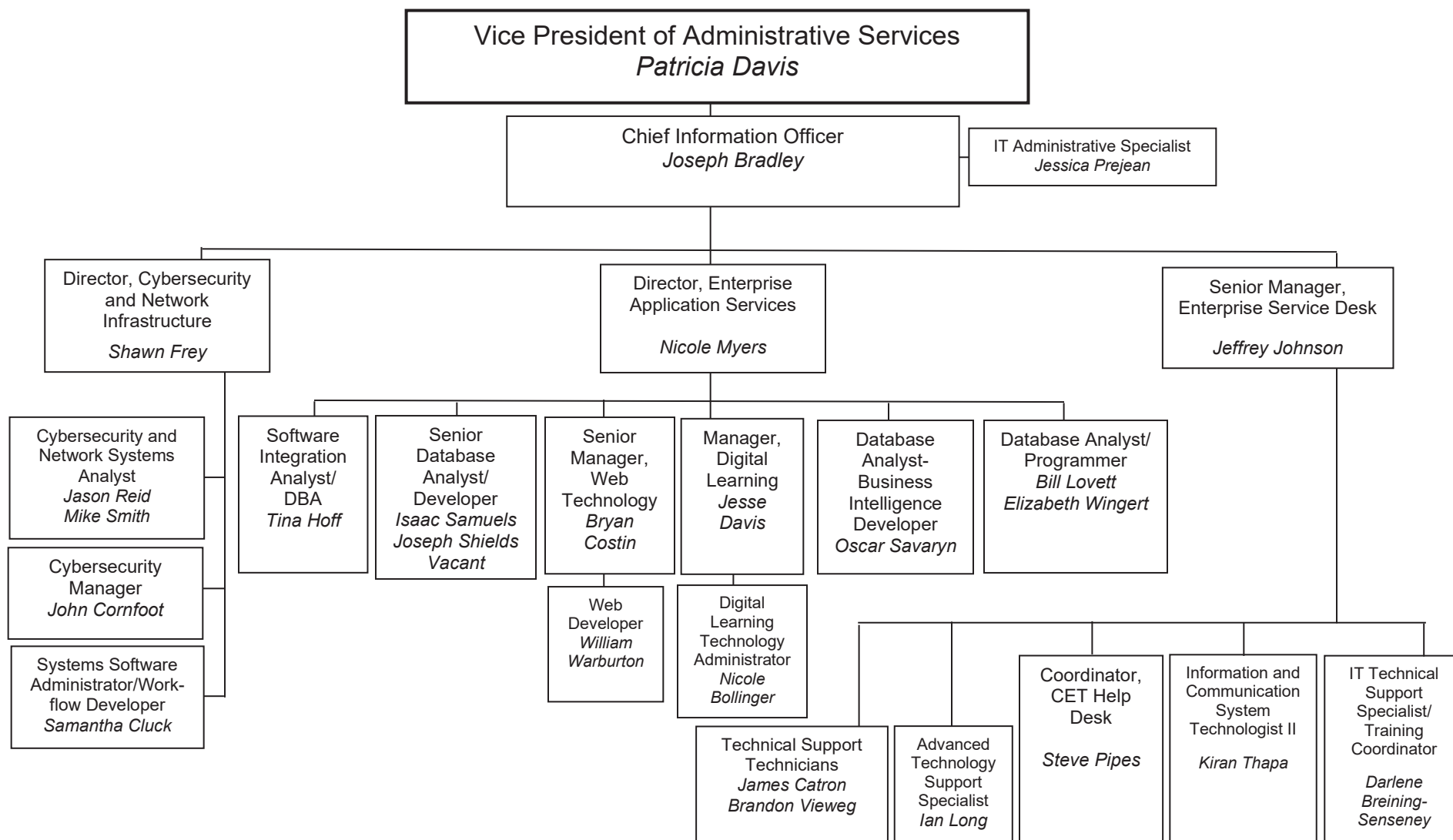
* Grant Positions

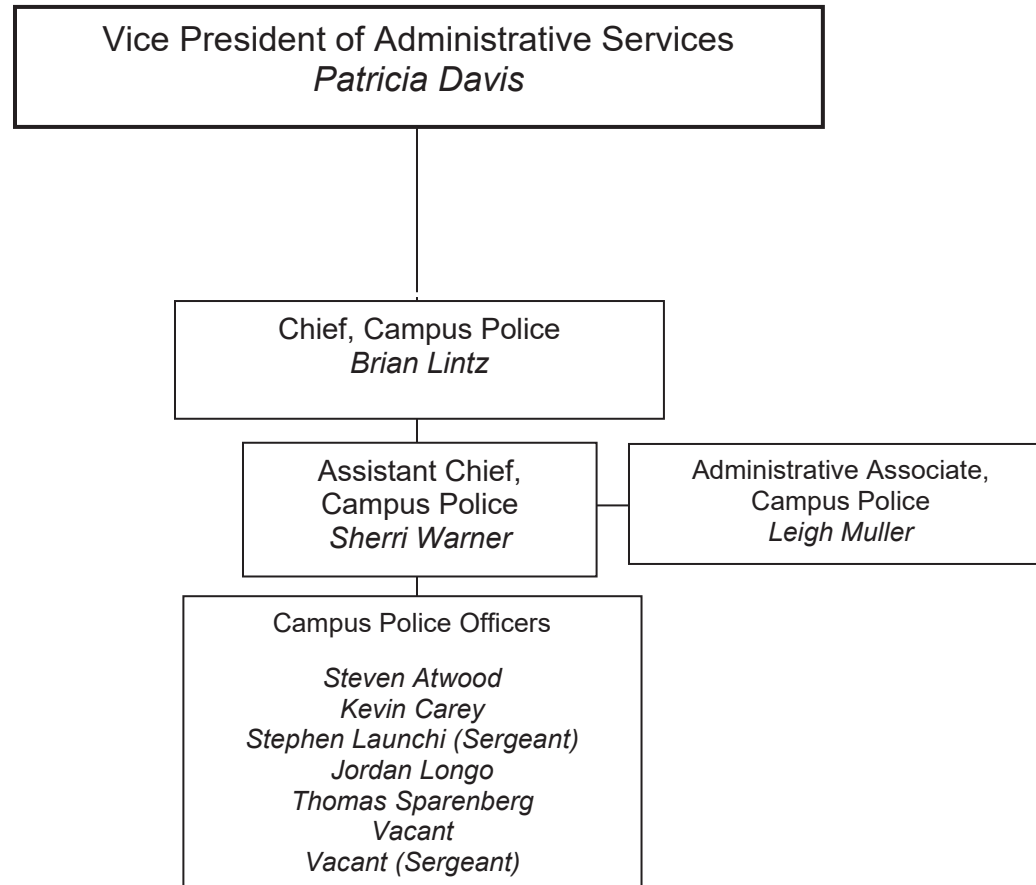
ADMINISTRATION

FISCAL AFFAIRS, FACILITIES, RISK MANAGEMENT, HUMAN RESOURCES



ADMINISTRATION: NETWORK AND TECHNOLOGY SERVICES



ADMINISTRATION: CAMPUS POLICE

ADMINISTRATION: ENVIRONMENTAL SERVICES